



TABLE OF CONTENTS

INTRODUCTION	2
XT-7000 FEATURES	2
INSTALLATION	2
A. GENERAL GUIDELINES	2
B. MOUNTING TYPES	3
C. POWER CONNECTION	3
HOW THE RADAR AND LASER WORK-GENERAL	4
A. HOW THE RADAR WORKS	4
B. RADAR & LASER FREQUENCIES	4
C. LASER DETECTION	4
D. LASER RANGE	4
OPERATION	4
A. SELF TEST	4
B. RADAR & LASER ALARMING	4
C. HIGHWAY MODE	5
D. CITY MODE	5
E. DIP MODE	5
F. MUTE MODE	5
G. HOW THE DETECTOR WARNS	5
H. WIDE BAND OPTIONS	6
I. RESET	6
MAINTENANCE	6
FUSE REPLACEMENT INSTRUCTIONS	7

INTRODUCTION

Congratulations !

You have just purchased one of the world's most sophisticated radar detectors.

Please read this instruction manual before installation. All instructions are necessary to achieve optimum use and trouble-free performance from your XT-7000.

However, owning a radar-detector does not give you a license to speed. It is to be used as defence against unnecessary speeding offences caused by revenue-generating speed traps or occasional lapses of concentration on the part of the driver. Please drive safely.

XT-7000 FEATURES

1. ON/OFF and Dip key (PWR)

Key to switch the appliance ON/OFF. To dip or to switch the display off, you should keep this key pressed.

2. Volume key (▽/△)

Key to adjust the volume of the alarm tones.

3. Mute button

Activates mute mode, which silences the audio alarm only.

4. City/Highway button (CITY)

Decreases the unit sensitivity to radar signals when city mode is engaged.

5. Speaker

6. Power Input Jack

7. Receiving window Radar

8. Receiving window Laser

9. Lock switch for windshield bracket (LOCK)

10. Windshield bracket

11. Power cord

12. Hook and loop fastener tape

INSTALLATION

A. GENERAL GUIDELINES

The following are some guidelines for mounting the detector :

- Mount the detector so that the receiving window/sensor has an unobstructed view of the road ahead. The sensor is located at the opposite end from the control panel.
- The unit may be positioned within 25° of horizontal without significantly degrading performance.
- Do not mount directly behind windshield wipers.
- Do not mount behind a mirrored sunscreen, as it has a thin layer of aluminium on a plastic film which will block radar/laser signals.

GB-2



- Mount the unit so that the control panel is plainly visible for the driver.
- Do not leave it in direct sunlight for long periods of time.

B. MOUNTING TYPES

We have provided 2 types of mounting methods.

• DASHBOARD MOUNTING (Illustration II)

The hook and loop fastener Velcro tape provided, may be used to mount your detector on a flat dashboard. The dashboard must be clean and dry for the fastener to adhere properly.

- Remove backing from the "LOOP(fuzzy)" piece and press firmly to the bottom of your unit.
- Clean dashboard with common rubbing alcohol to remove dirt and grease.
- Peel the backing from the hook side and press the unit into the desired position on the dashboard.

• WINDSHIELD MOUNTING (Illustration III)

- Insert the supplied suction cups and cushion into each slot and windshield bracket.
- Slide the windshield bracket into the groove of the detector.
- Use the Lock switch (LOCK) to lock the windshield bracket.

- Locate the bracket on a clean windshield and press firmly on each suction cup.

FOR BEST PERFORMANCE WINDSHIELD MOUNTING IS RECOMMENDED!

C. POWER CONNECTION

The XT-7000 is designed to operate from the normal 12Volt electrical system and must be used with a negative ground electrical system. Do not operate your XT-7000 on positive ground electrical system. Consult your vehicle owners' manual if you are not certain of its polarity.

- After you position and mount detector, insert the DC power cable into the jack on detector's side.
- Remove vehicle cigar lighter from its socket and insert the other end of power cable into the lighter socket plug.
- For permanent installation, you will have to remove the cigar lighter plug, take a 1A-fuse and connect the cables directly.

GB-3



HOW THE RADAR AND LASER WORK-GENERAL

A. HOW THE RADAR WORKS

The actual process involved in determining a vehicle's speed is basically a simple one. It involves directing a beam of microwave energy at an approaching target vehicle. A portion of this beam is reflected by the target and is received by the radar unit that originally transmitted the signal. The reflected signal is shifted in frequency by an amount proportional to the speed of the target vehicle. This phenomenon is known as the Doppler effect. The radar unit determines the target vehicle speed from the difference in frequency between the reflected signal and original signal.


B. RADAR & LASER FREQUENCIES

The QUINTEZZ XT-7000 can detect 6 radar bands:

- K-Band 24.125 GHz
- K-Band 24.150 GHz
- K-Band 24.220 GHz
- Ka-Band 34.30 GHz
- Ka-Band 34.36 GHz
- Ka-Band 35.70 GHz

C. LASER DETECTION

Laser detection is the 7th band that can be detected.



Laser Speed Gun uses pulses of infrared laser light to measure speed of target by timing each pulses over time as it is reflected back to the gun.

D. LASER RANGE

The effective range of clocking distance by a laser gun is less than 250M. So, mount your laser detector as low as possible in the car.

The QUINTEZZ XT-7000 offers the possibility to detect a laser from before as well as from behind.

OPERATION

A. SELF TEST

Press the ON/OFF key (PWR) to switch the unit ON. If the unit is switched ON, it will immediately perform a self-test. During the test the different steps will be shown in the display and the different tones will be activated. If the test is finished and the different settings were shown, the display will show the word CITY or HIGHWAY. Press the ON/OFF key (PWR) again to switch the unit OFF.

B. RADAR & LASER ALARMING

The detector identifies the band on which the signal is received by means of different tones and an indication in the display. With the detection of a radar

GB-4



signal the indication of the band is shown. The strength of the signal is shown in the display by means of a rising column followed by a number. With the detection of a Laser Speed Gun 'LASER' appears in the display.

C. HIGHWAY MODE

Highway mode provides full audio alarms and maximum sensitivity for open road driving. It is automatically activated when power is applied or your unit is turned ON.

D. CITY MODE

There are many sources of false alarm signals near cities. There are for instance several types of automatic doors that use the same signal as a radar.

The purpose of the city mode is to reduce sensitivity to eliminate most false sources so that the unit will not alarm for weak signals.

To access the city mode, simply press the 'CITY' button. To turn OFF, press the button again.

E. DIP MODE

At night or if you wish that the display is not illuminated, you can keep the ON/OFF key (PWR) pressed during 2 seconds to dip the lighting or again during 2 seconds to switch the lighting completely off.

F. MUTE MODE

During a radar transmission when the audio alarm is sounding, you have the option to MUTE the alarm by pressing the 'MUTE' button momentarily.

After 20 seconds the unit will de-MUTE automatically. You do not have to reset the unit.

G. HOW THE DETECTOR WARNS

! Starts to beep slowly, then increases in rate very rapidly.

- FULL WARNING = Most likely police radar.

! Beeps just once.

- EXERCISE CAUTION = Most likely a false source or could be pulsed radar.

! Very fast beep rate instantly.

- FULL WARNING = Radar close but has been suddenly switched on.

! Slow beep rate as you approach hill or bridge. Sharp increase in beep rate as you reach hill or bridge.

- FULL WARNING = Most likely police radar on other side of hill or bridge.

! Short term, weak beeping, series of signals.

- EXERCISE CAUTION = Most likely a false radar source.

GB-5



H. WIDE BAND OPTIONS

For the different bands K, Ka and Laser, you can set different tones and set the band ON or OFF.

Press during 2 seconds the MUTE key to set the tone. Use the ▽ and △ key to select the required tone.

Press the MUTE key again during 2 seconds to set the different bands ON or OFF.

Use the ▽ and △ key to select the required setting.

Important: If you wait during programming longer than 20 seconds to press a key, programming will be automatically ended.

1 x MUTE	▽/△	Tone1 Tone2 Tone 3
2 x MUTE	▽/△	K ON K OFF
3 x MUTE	▽/△	Ka ON Ka OFF
4 x MUTE	▽/△	Laser ON Laser OFF

To test the indication of each signal, you can put the unit in Test-stand by pressing the CITY and MUTE key simultaneously. If you press the ON/OFF key (PWR), you go back to Standby-mode.

I. RESET

This action makes it possible to undo all settings and to go back to the default settings.

- Keep the ON/OFF (PWR) and the MUTE key pressed simultaneously.
- Turn the unit on by connecting the cigar lighter plug.
- Wait a moment till you hear 2 small beeps..
- Relinquish the ON/OFF (PWR) and the MUTE key.

MAINTENANCE

To keep your detector in good condition, follow these simple steps :

- Never leave the set on the visor, windshield or dashboard when you park your vehicle.
- Do not expose the unit to moisture.
- Always unplug the power cable or turn off the power when not in use.

If your unit does not work anymore (no test by switching on), we advise you to complete following checks:

- Is the power cord properly plugged in at both ends?
- Is the fuse OK?
- Is the cigar lighter socket clean and free from corrosion?
- Is the ON/OFF key (PWR) used to switch the unit ON?

GB-6



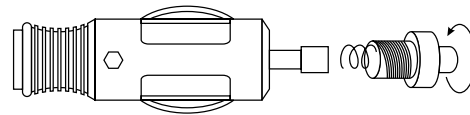
FUSE REPLACEMENT INSTRUCTIONS

Do not use any tools to change the fuse.

- Press the top of the fuse holder down and rotate it anti-clockwise approx. 30°. Lift the top straight up.
- Remove the fuse and replace if required by one of the same rating. The silver tip contains a spring which may fly off when disassembling. The fuse should be inserted before the spring.
- Place the top of the fuse-holder back on the body. Press down and rotate the top of the fuse holder clockwise approx. 30°.

NOTE:

- Failing to press the top of the fuse holder down prior to rotating it will damage the fuse holder. Use of pliers to rotate the top may also cause damage.
- Illustration indicates direction that the fuse holder top must be rotated to reassemble.



GB-7



Illustration I

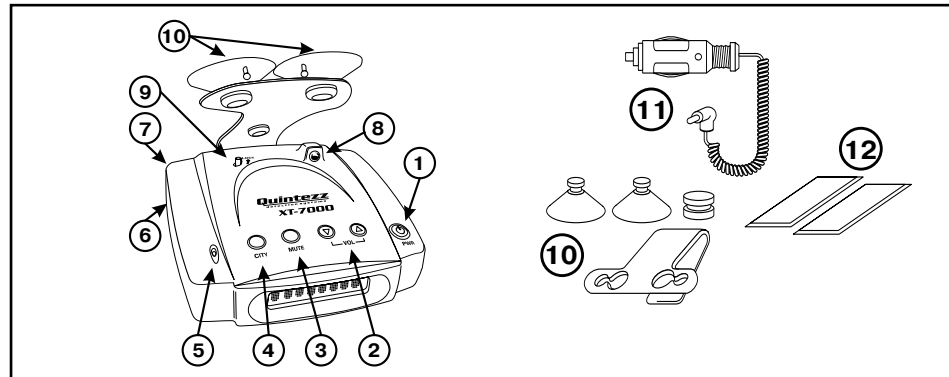


Illustration II

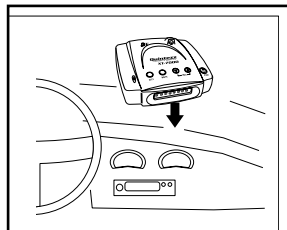
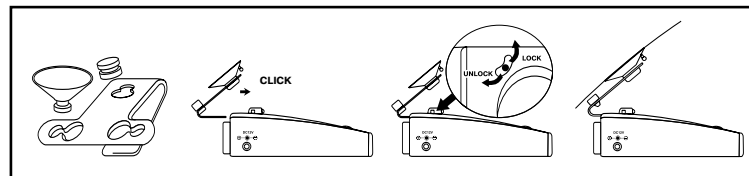


Illustration III





XT-7000/11-02/V01

